

BREATHER - STRAINER ASSEMBLY / SUMP STRAINER

Interchangeable 3.00 (76.20mm), 6.00 (152.40mm) and 8.00 (203.20mm) strainer permits easy fluid flow. Rapid filling and easy to clean. The breather cap has deep grip flutes for ease of removal. The removable twist lock breather cap is protected against loss by safety chain. Vented cap is standard, non-vented cap is available - **Please specify**. Cap and flange are plated for maximum corrosion resistance. Side mounted breather assembly housing is engineered for use with all strainer lengths. **FB113**, **FB116** and **FB163** furnished with rigid inner guard (**FIG. B**). All models complete with mounting bolts, nuts, lock washers, sealing washers and oil resistant composite gaskets.

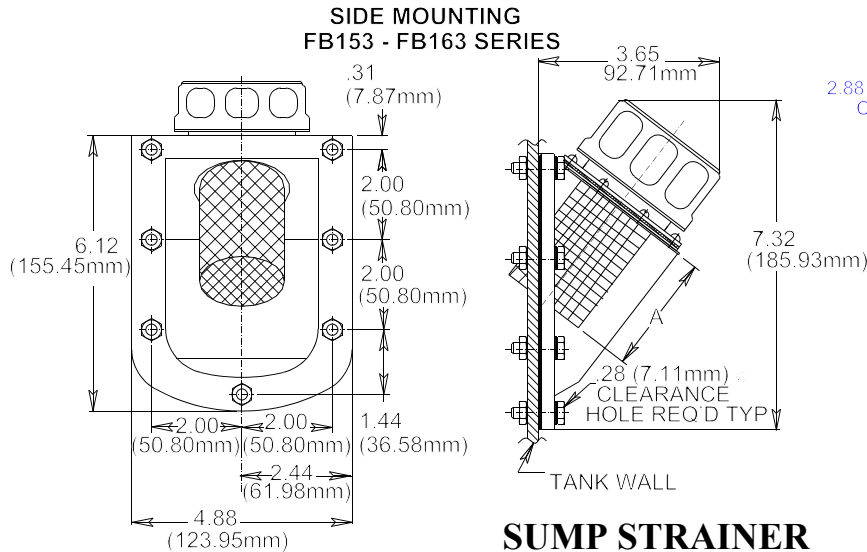
STANDARD MATERIALS:

- Stainless steel strainer
- Chrome plated breather cap
- Side mounted breather housing is anodized cast aluminum

OPERATING CONDITIONS:

- 30 mesh strainer
- 40 micron filter breather will handle 30 cu. ft. (.84 cu. m) of air per minute at differential pressure of less than 1.00 (25.40mm) Hg.

TOP MOUNTING CATALOG NUMBER		SIDE MOUNTING CATALOG NUMBER		A INCHES (mm)
WITHOUT GUARD	WITH GUARD	WITHOUT GUARD	WITH GUARD	
FB103	FB113	FB153	FB163	3.00 (76.20)
FB106	FB116	-	-	6.00 (152.40)
FB108	-	-	-	8.00 (203.20)



TOP MOUNTING
FB103 - FB116 SERIES

FIG B
RIGID GUARD

SUMP STRAINER

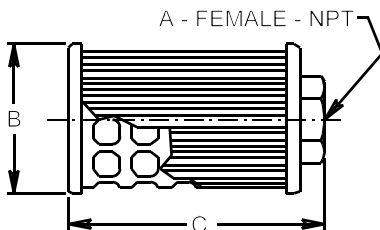
Rigid one piece inner frame prevents collapse. Wire screening is completely reusable and easily cleaned. Excellent flow-through. Serves most filter requirements; suitable for most hydraulic oils, coolants and lubricants.

STANDARD MATERIALS:

- Steel construction
- End plates and inner frame (see cutaway) are steel, zinc plated
- Stainless steel wire screening

OPERATING CONDITIONS:

- 5 to 30 GPM (18.9 to 113.6 LPM) range
- .2 PSI (1.38 kPa) pressure drop through clean element at rated flow of 150 SSU viscosity oil.



CATALOG NUMBER	A - NPT	B - DIA. INCHES (mm)	C - LENGTH INCHES (mm)	CAPACITY GPM (LPM)
100 MESH SCREEN				
SS104	1/2	2.62 (66.55)	3.12 (79.25)	5.0 (18.9)
SS105	3/4	2.62 (66.55)	3.50 (88.90)	8.0 (30.3)
SS106	1	2.62 (66.55)	5.41 (137.41)	10.0 (37.9)
SS107	1 - 1/4	3.41 (86.61)	6.91 (175.51)	20.0 (75.7)
SS108	1-1/2	3.41 (86.61)	7.91 (200.91)	30.0 (113.6)



LUBE DEVICES, INC.

1864 NAGLE AVE., P.O. BOX 1810, MANITOWOC, WI 54221-1810
 PHONE: (920) 682-6877 FAX: (920) 684-7210
 E-MAIL: sales@lubedevices.com WEBSITE: www.lubedevices.com

BREATHER - STRAINER ASSEMBLY SUMP STRAINER

3/04 **BULLETIN F1297-1**

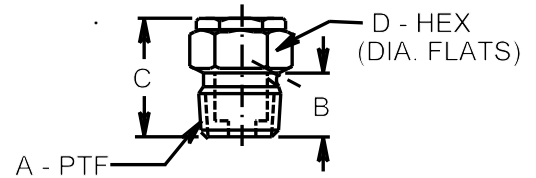
VENTS / BREATHERS

FILTER VENT

CATALOG NUMBER	A	B - INCHES (mm)	C - INCHES (mm)	D - INCHES (mm)
FV101-S	1/8	.31 (7.87)	1.06 (26.92)	.75 (19.05)
FV102-S	1/4	.50 (12.70)	1.19 (30.23)	.75 (19.05)
FV103-S	3/8	.50 (12.70)	1.03 (26.16)	.75 (19.05)
FV104-S	1/2	.62 (15.75)	1.21 (30.73)	.94 (23.88)
FV105-S	3/4	.62 (15.75)	1.37 (34.80)	1.12 (28.45)
FV106-S	1	.81 (20.57)	1.56 (39.62)	1.38 (35.05)

STANDARD MATERIALS:

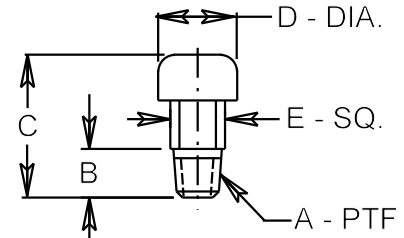
- 40 micron filter element which is easily removable for cleaning.
- Steel zinc plated construction.
- * Optional 10 micron filter element is available



PROTECTED VENT

CATALOG NUMBER	A	B - INCHES (mm)	C - INCHES (mm)	D - INCHES (mm)	E - INCHES (mm)
AV101	1/8	.33 (8.38)	1.12 (28.45)	.56 (14.22)	.44 (11.18)
AV102	1/4	.50 (12.70)	1.19 (30.23)	.75 (19.05)	.56 (14.22)
AV103	3/8	.51 (12.95)	1.25 (31.75)	1.00 (25.40)	.69 (17.53)
AV104	1/2	.66 (16.76)	1.31 (33.27)	1.25 (31.75)	.88 (22.35)
AV105	3/4	.66 (16.76)	1.50 (38.10)	1.50 (38.10)	1.12 (28.45)

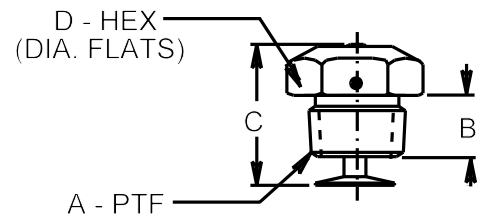
- Labyrinth air path restricts direct entry of dirt and moisture.
- Aluminum construction.



BAFFLE VENT

CATALOG NUMBER	A	B - INCHES (mm)	C - INCHES (mm)	D - INCHES (mm)
AV51	1/8	.31 (7.87)	.75 (19.05)	.44 (11.18)
AV52	1/4	.50 (12.70)	1.00 (25.40)	.62 (15.75)
AV53	3/8	.50 (12.70)	1.00 (25.40)	.69 (17.53)
AV54	1/2	.64 (16.26)	1.16 (29.46)	.88 (22.35)
AV55	3/4	.66 (16.76)	1.50 (38.10)	1.25 (31.75)

- Used to vent gear cases, transmission housings, speed reducers, etc.
- Low profile, economical vent with copper baffle that deflects splashed fluid.
- Steel body.



HIGH FLOW VENT

LDI Industries' high flow vent features a large flow area with a low profile and tamper proof cap.

STANDARD MATERIALS:

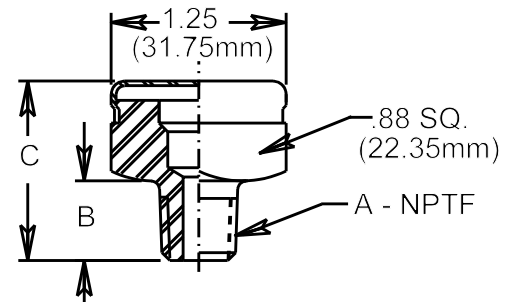
- Steel construction
- Zinc plated

CURRENTLY MADE TO ORDER.
(MINIMUM ORDER MAY BE REQUIRED)

When ordering, select the catalog number from the chart, followed by optional suffix letter for features:
No Suffix = Full flow.

- B Baffle.
- F Felt filter (SAE F10 material).
- S Screen (100 mesh stainless steel).

EXAMPLE: AV204 - S - Optional screen (100 mesh stainless steel).
AV204 Series



CATALOG NUMBER	A	B - INCHES (mm)	C - INCHES (mm)
AV201	1/8	.38 (9.65)	1.08 (27.43)
AV202	1/4	.56 (14.22)	1.26 (32.00)
AV203	3/8	.56 (14.22)	1.26 (32.00)
AV204	1/2	.75 (19.05)	1.45 (36.83)



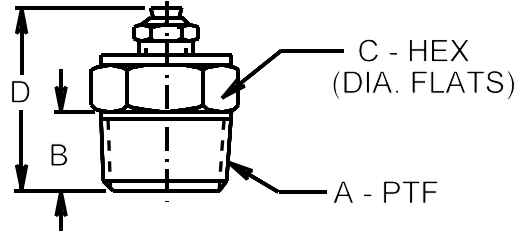
Lube Devices • Flodar • Hydra-Tool • Vescor
1864 Nagle Ave. P. O. Box 1810
Manitowoc, WI 54221-1810
Phone: (920) 682-6877 Fax: (920) 684-7210
E-MAIL: sales@ldi-industries.com WEBSITE: www.ldi-industries.com

10/06

VENTS / BREATHERS
BULLETIN F1297-2
ISO9001:2000 CERTIFIED

RELIEF VENTS / SAMPLING VALVES

Dual purpose relief or filler vent plugs can be used for gear box housings and bearings where excessive pressures are not desirable. Unit will reseal itself for continuous duty.



STANDARD MATERIALS:

- Brass construction and plated steel

OPERATING CONDITIONS:

- 1 to 80 psi (6.9 to 551.6 kPa)

When ordering, select catalog number followed by suffix number for relief pressure - (x).

EXAMPLE: PRV104 - 4 — 15 to 25 PSI (103.4 to 172.4 kPa) relief pressure.
1/2-14 PTF

CATALOG NUMBER	A	B - INCHES (mm)	C - INCHES (mm)	D - INCHES (mm)
PRV101-(x)	1/8-27	.31 (7.87)	.44 (11.18)	.59 (14.99)
PRV102-(x)	1/4-18	.50 (12.70)	.62 (15.75)	1.12 (28.45)
PRV103-(x)	3/8-18	.50 (12.70)	.75 (19.05)	1.19 (30.23)
PRV104-(x)	1/2-14	.62 (15.75)	.88 (22.35)	1.38 (35.05)

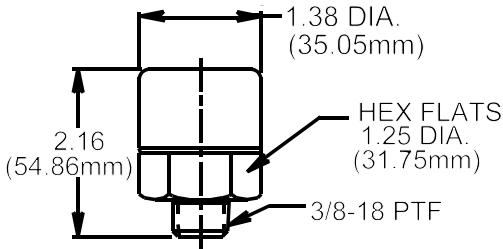
SUFFIX	-1 PSI (kPa)	-2 PSI (kPa)	-3 PSI (kPa)	-4 PSI (kPa)	-5 PSI (kPa)
MIN.	.25 (1.7)	1 (6.9)	7.50 (51.7)	15 (103.4)	45 (310.3)
MAX.	1 (6.9)	5 (34.5)	15 (103.4)	25 (172.4)	80 (551.6)

PRESSURE / VACUUM BREATHERS

Allow sealed pressure systems to vent off excess pressure as heat builds up. As the system cools, outside air pressure is also allowed back in. Filter keeps dirt from entering into system.

STANDARD MATERIALS:

- 20 micron bronze filter.
- Steel body.
- Aluminum cap.
- Buna N seals.



CATALOG NUMBER	PSI (kPa)	VACUUM INCHES Hg (mm Hg)
PRV201-03	3.0 (20.7) / 6.0 (41.4)	2.0 (50.8) / 3.0 (76.2)
PRV201-13	6 (41.4) / 12 (82.7)	28 (711) / 30 (762)
PRV201-30	0.4 (2.8) / 0.9 (6.2)	20 (508) / 25 (635)

SAMPLING VALVE

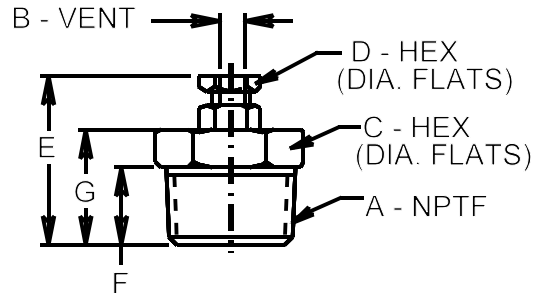
Used to bleed excessive air pressure out of system or to sample liquid in system to view condition and clarity. Locknut prevents screw from backing out of base in high vibration situations.

STANDARD MATERIALS:

- Brass construction
- Stainless steel ball seated in brass

OPERATING CONDITIONS:

- For pressures up to 6000 PSI (41370 kPa)



CATALOG NUMBER	A	B - INCHES (mm)	C - INCHES (mm)	D - INCHES (mm)	E - INCHES (mm)	F - INCHES (mm)	G - INCHES (mm)	FEATURES
V101	1/8	.076 (1.93)	.56 (14.22)	.38 (9.65)	1.19 (30.23)	.38 (9.65)	.69 (17.53)	WITH LOCKNUT

RELIEF VENTS / SAMPLING VALVES

10/06 **BULLETIN F1297-4**

ISO9001:2000 CERTIFIED



Lube Devices • Flodar • Hydra-Tool • Vescor

1864 Nagle Ave. P. O. Box 1810

Manitowoc, WI 54221-1810

Phone: (920) 682-6877 Fax: (920) 684-7210

E-MAIL: sales@ldi-industries.com WEBSITE: www.ldi-industries.com