

A.D.P.

series of cylinders



The A.D.P. series of cylinders is a line of product that INTERCHANGES with several manufacturers of NON TIE ROD-REPAIRABLE cylinders, whose design concepts for the retention of HEAD & CAP to body of Cylinder are as follows:

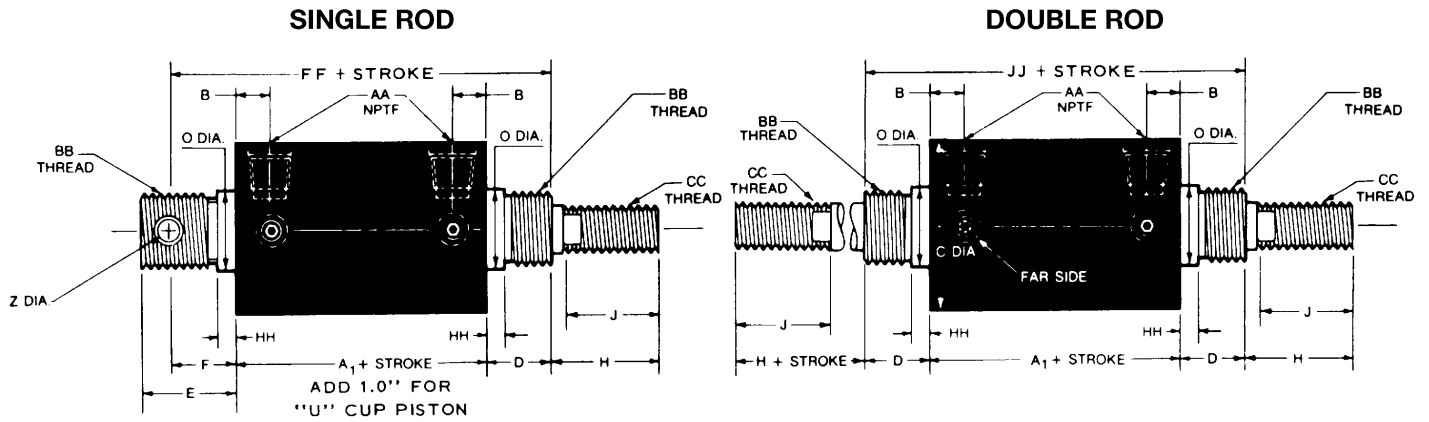
1. Retaining Ring
2. Feed Ring Wire
3. Drilled & Pinned
4. Threaded
5. Crimped

CHICAGO CYLINDER a leader in its own right recognizes the merits in each of these concepts, and utilizes in its A.D.P. Series-3 of the above — ALWAYS maintaining dimensional interchangeability.

CONSTRUCTION FEATURES

- | | |
|--|---|
| 1. HEAD & CAP | Screw machined high tensile aluminum heads. |
| 2. CYLINDER TUBE | Hard Coated I.D. Heavywall aluminum tube (an industry standard) is precision machined for perfect fit and alignment. |
| 3. PISTON | High Grade Aluminum alloy machined for “O” ring construction (STANDARD) or “U” cup construction. |
| 4. PISTON ROD | Machined from turned ground and polished high tensile steel. Also available in chrome plated or stainless steel. |
| 5. ROD BEARING | Replaceable nylon (low friction) rod bearing provides free smooth travel. |
| 6. ROD SEAL | Self compensating design provide excellent sealing and long life. |
| 7. CUSHIONS | Available on all bore sizes. Fully adjustable on either or both ends. These cushions provide positive checking of linear travel, and the reversible cushion seal allows for fast break away from the cushion. |
| 8. RETAINING RING | High Strength Steel ring precision made, ensures secure locking of head and cap to cylinder tube. |
| 9. SEALS | Seals are Buna N as standard for air service. Viton available for temperatures to 300°F. |
| 10. THREADED & CRIMPED CONSTRUCTION | Some models (not affecting dimensional interchangeability or repairability) are constructed utilizing our unique FORM-LOK Crimp Method on one end and threaded on the other. |
| 11. THREADED TANG | Standard on these type cylinders for either pivot MTG or MTG nut. |
| 12. PIVOT BEARING | Bearing Bronze. |

BASIC CYLINDER DIMENSIONS

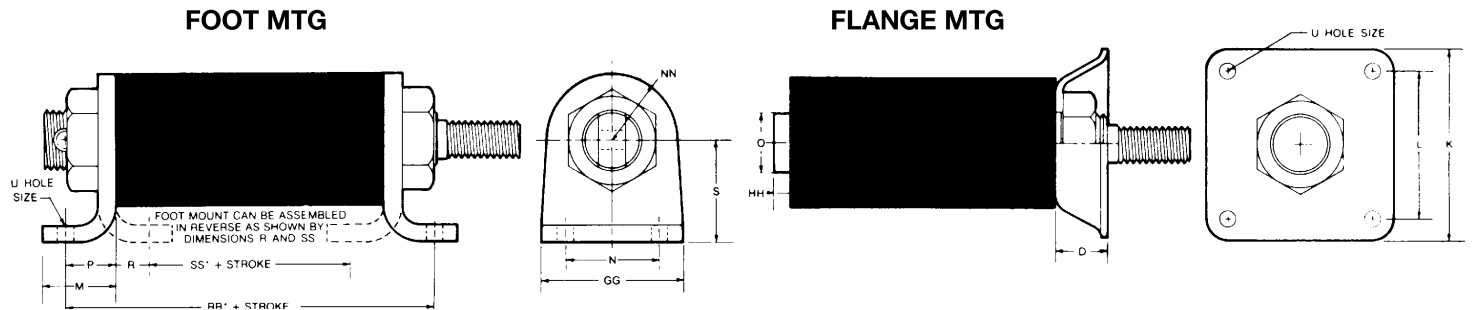


DIMENSIONS — MODEL ADP (SINGLE ROD) AND ADR (DOUBLE ROD)

MODEL	BORE	ROD DIA.	A	B	C	D	E	F	G*	H	J	O	Z	AA	BB	CC	FF	HH	JJ
ADP 9	1 1/8	3/8	2 1/16	13/32	13/8	5/8	1	11/16	3/8	1	7/8	3/4	1/4	1/8	3/4-16	3/8-16	3 3/8	3/32	35/16
ADP 12	1 1/2	5/8	2 5/8	1/2	1 3/4	7/8	1 1/4	7/8	1/2	1 7/16	1 1/4	1 1/16	5/16	1/4	1-14	1/2-13	4 3/8	1/8	4 3/8
ADP 16	2	5/8	2 5/8	1/2	2 1/4	7/8	1 1/4	7/8	1/2	1 7/16	1 1/4	1 1/16	5/16	1/4	1-14	5/8-11	4 3/8	1/8	4 3/8
ADP 20	2 1/2	3/4	2 7/8	5/8	2 3/4	1	2	1 3/8	5/8	1 11/16	1 1/2	1 3/8	7/16	3/8	1 3/8-12	3/4-10	5 1/4	3/16	4 7/8
ADP 24	3	3/4	2 7/8	5/8	3 1/4	1	2	1 3/8	5/8	1 11/16	1 1/2	1 3/8	7/16	3/8	1 3/8-12	3/4-10	5 1/4	3/16	4 7/8
ADPU 32	4	1	5	13/16	4 1/4	1 1/8	2 3/16	1 7/16	3/4	2 1/4	1 7/8	1 3/4	1/2	1/2	1 3/4-12	1-14	7 9/16	3/16	7 1/8

*G = WIDTH OF PIVOT EAR

MOUNTING ACCESSORIES AND DIMENSIONS



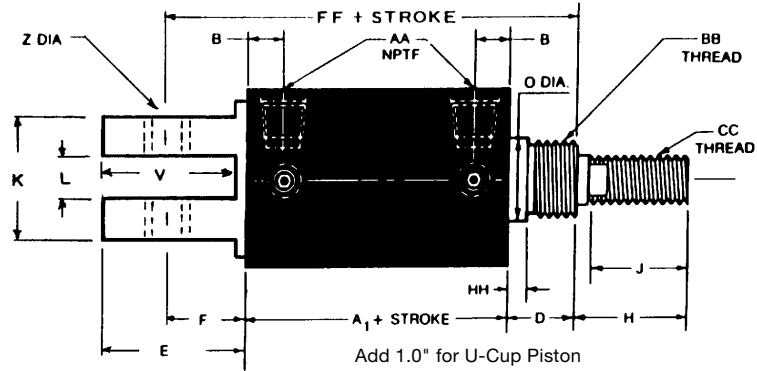
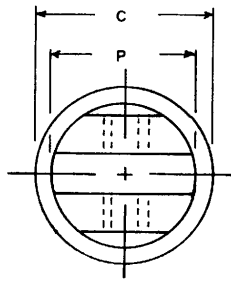
ADD 1.0 INCH TO "RR" AND "S" DIMENSION FOR "U" CUP CYLINDERS

FOOT MOUNT	FLANGE MOUNT	BORE SIZE	D	K	L	M	N	O	P	R	S	U	GG	HH	NN	RR	SS
AFM-2	AFB-2	1 1/8	5/8	2 1/2	2	1 3/8	1 11/16	3/4	7/8	5/8	1 9/32	9/32	2 11/16	3/32	1 1/16	3 13/16	13/16
AFM-3	AFB-3	1 1/2	7/8	3 1/4	2 1/2	1 9/32	1 5/8	1 11/16	7/8	9/16	1 3/4	9/32	2 7/16	1/8	1 1/8	4 3/8	1 1/2
AFM-3	AFB-3	2	7/8	3 1/4	2 1/2	1 9/32	1 5/8	1 11/16	7/8	9/16	1 3/4	9/32	2 7/16	1/8	1 1/8	4 3/8	1 1/2
AFM-4	AFB-4	2 1/2	1	4 1/2	3 3/8	1 29/32	2 1/4	1 3/8	1 1/4	7/8	2 3/8	1 3/32	3 9/16	3/16	1 5/8	5 3/8	1 1/8
AFM-4	AFB-4	3	1	4 1/2	3 3/8	1 29/32	2 1/4	1 3/8	1 1/4	7/8	2 3/8	1 3/32	3 9/16	3/16	1 5/8	5 3/8	1 1/8
AFM-5	AFB-5	4	1 1/8	5 1/4	4	2 17/32	3 1/4	1 3/4	1 3/4	1 5/16	3 3/16	1 5/32	4 13/16	3/16	2 3/16	8 7/8 Δ	2 3/4 Δ

Δ Dimension shown is for Lipseal Piston Type

BASIC CYLINDER DIMENSIONS

SINGLE ROD



ADC 9 – O-Ring Piston Seal Only
 ADC 32 – U-Cup Piston Seal Only

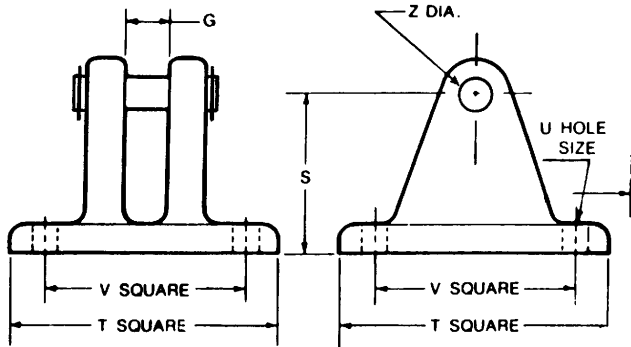
DIMENSIONS — MODEL ADC (SINGLE ROD)

MODEL	BORE SIZE	ROD DIA.	A	B	C	D	E	F	H*	J	K	L	O	P	V	Z	AA	BB	CC	FF	HH
ADC 9	1 1/8	3/8	2 1/16	13/32	1 3/8	5/8	1	1 1/16	1	7/8	15/16	3/8	3/4	1 1/8	7/8	3/8	1/8	3/4-16	3/8-16	3 3/8	3/32
ADC 12	1 1/2	5/8	2 5/8	1/2	1 3/4	7/8	1 5/8	1 5/16	2 7/16	1 1/4	1 1/4	1/2	1 1/16	1 1/2	1 1/2	3/8	1/4	1-14	1/2-13	4 7/16	1/8
ADC 16	2	5/8	2 5/8	1/2	2 1/4	7/8	2 1/4	1 9/16	2 7/16	1 1/4	1 1/2	1/2	1 1/16	2	1 3/4	1/2	1/4	1-14	5/8-11	5 1/16	1/8
ADC 20	2 1/2	3/4	2 7/8	5/8	2 3/4	1	1 13/16	1 1/8	3 11/16	1 1/2	1 1/2	1/2	1 3/8	2 1/4	1 11/16	1/2	3/8	1 3/8-12 3/4-10	5	3/16	
ADC 24	3	3/4	2 7/8	5/8	3 1/4	1	2 5/16	1 5/8	3 11/16	1 1/2	1 1/2	1/2	1 3/8	2 1/4	1 3/4	1/2	3/8	1 3/8-12 3/4-10	5 1/2	3/16	
ADCU 32	4	1	5	13/16	4 1/4	1 1/8	3 3/8	2 3/8	2 1/4	1 7/8	2 1/4	3/4	1 3/4	3	2 1/2	3/4	1/2	1 3/4-12	1-14	8 1/2	3/16

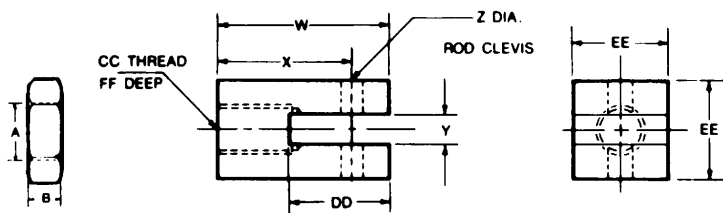
*1 1/2"-3" BORE ADCU SUBTRACT 1" FOR U-CUP SEAL

MOUNTING ACCESSORIES & DIMENSIONS

CLEVIS BRACKET

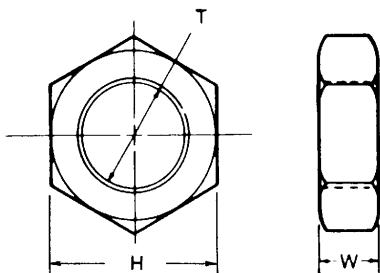


PART NUMBER	CYL. BORE	G	S	T	U	V	Z
APM-2	1 1/8	3/8	1 9/32	2 1/4	9/32	1 3/4	1/4
APM-3	1 1/2	1/2	1 3/4	3	9/32	2 1/4	5/16
APM-3	2	1/2	1 3/4	3	9/32	2 1/4	5/16
APM-4	2 1/2	5/8	2 3/8	4	13/32	3	7/16
APM-4	3	5/8	2 3/8	4	13/32	3	7/16
APM-5	4	3/4	3 3/16	5	15/32	3 3/4	1/2



ROD CLEVIS

PART NUMBER	CYL. BORE	ROD DIA	A	B	CC	DD	EE	FF	W	X	Y	Z
AC-2	1 1/8	3/8	3/8-16	7/32"	3/8"-16	1 1/8	3/4	5/8	1 3/4	1 3/8	5/16	1/4
AC-3 - 1/2	1 1/2	5/8	1/2-13	5/16"	1/2"-13	1 5/16	1	15/16	2 1/4	1 3/4	3/8	5/16
AC-3 - 5/8	2	5/8	5/8-11	3/8"	5/8"-11	1 5/16	1	15/16	2 1/4	1 3/4	3/8	5/16
AC-4	2 1/2	3/4	3/4-10	27/64"	3/4"-10	1 5/16	1 1/4	1 1/16	2 3/8	1 13/16	1/2	7/16
AC-4	3	3/4	3/4-10	27/64"	3/4"-10	1 5/16	1 1/4	1 1/16	2 3/8	1 13/16	1/2	7/16
AC-5 - 1"-14	4	1"	1"-14	35/64"	1"-14	1.812	1 1/2	1 9/16	3 3/8	2 5/8	5/8	1/2
AC-5 - 1 1/4-12	4	1 1/4	1 1/4-12	3/8"	1 1/4-12	2"	1 3/4	1 9/16	3 1/2	2 5/8	3/4	3/4



MOUNTING NUT FOR ACCESSORIES

BORE	PART NO.	A	B
1 1/8"	ANMN-2	3/4-16	27/64"
1 1/2" & 2"	ANMN-3	1-14	35/64"
2 1/2" & 3"	ANMN-4	1 3/8-12	25/32"
4"	ANMN-5	1 3/4-12	1"

How To Order

Magnetic Piston Prefix Model # With "M" Pneumatic / Double Acting only	EXAMPLE				
Double Acting Non Rotating Prefix with "N" Stainless Not Available 1½" & 2" Bore only	ADPU -	24 -	6 -	R -	V
MOUNTING	↑				
ADP = Double Acting Pivot with O-Ring Piston	↑				
ADC = Double Acting Clevis with O-Ring Piston					
ADPU = Double Acting Pivot with U-Cup Piston					
ADCU = Double Acting Clevis with U-Cup Piston					
ADR = Double Acting, Double Rod with O-Ring Piston					
ADRU = Double Acting, Double Rod with U-Cup Piston					
Max Stroke 60"					
BORE	↑				
9 = 1⅛"	↑				
12 = 1½"					
16 = 2"					
20 = 2½"					
24 = 3"					
32 = 4"					
U Cup Piston Style Only	↑				
STROKE▲	↑				
CUSHION If no cushion leave blank	↑				
B = Rear					
R = Front					
BR = Both					
OPTIONS	↑				
V = Viton	↑				
S - Stainless Steel Rod					
NT - No Tang					
NL = Non Lube Service					
PC = Poly Coat					
QO = Bumpers					
H = Hydraulic 1⅛" - 1½" - 2" only					

Other Options Available Contact Fact.