

CATALOG

grippers

AG Series
Angular Grippers



NUMATICS

AG <i>Series Angular Grippers</i>	3-8
Features and Benefits	3
How To Order	4
Dimensions	5
Specifications and Load Ratings	6
Switch Information	7



AG-Series Angular Grippers

Designed to handle real world angular gripper applications

The Numatics Motion Control AG-Series Angular Gripper utilizes a double acting piston with a dual pivot system. The piston has a single center pivot that drives each gripper jaw open and closed. The gripper jaws have an independent stationary pivot which each jaw arcs about. The ratio between the piston and jaw pivots has been optimized for maximum operating performance.

The Numatics Motion Control AG-Series Angular Gripper is a cartridge style design. The cartridge design utilizes a minimum number of components, seven major components in all. The cartridge design offers the greatest grip force to size ratio over other conventional designs.

A. Body:

- Cartridge design produced from extruded alloy aluminum.
- Hardcoat anodized with Teflon®, reduced friction, reduced wear
- High finish bores for increased seal life
- Sensor mounting rail for easy access mounting (not available on AG010)
- Light weight, durable, long life

B. Piston:

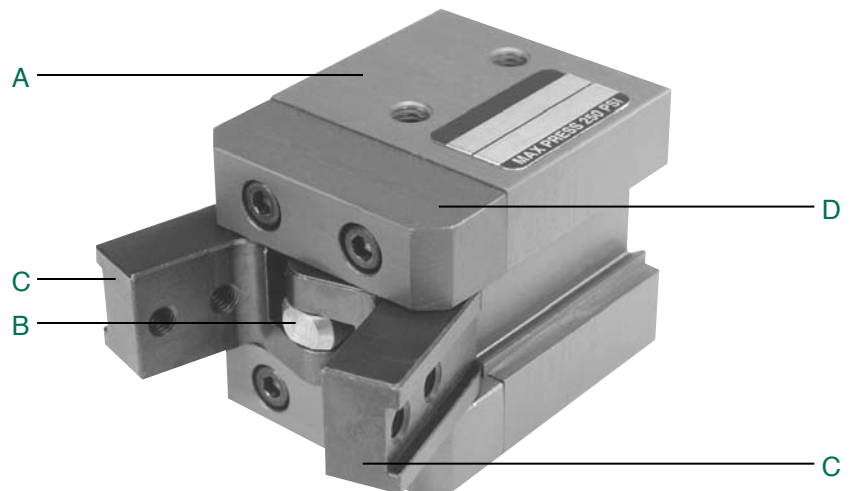
- Single piece, stainless steel design
- Corrosion resistant
- Magnetic sensing band standard ALL sizes

C. Jaws:

- Hardened alloy steel with lubrication
- Keyway slot for tooling location
- 32 degree jaw motion
- Each jaw travels 1 degree beyond center

D. Pivot Pins:

- Hardened alloy steel
- Reduced friction, low wear, increased service life
- Supported by polymer bushings





AG Series Angular Grippers

NUMATICS®

How to Order

AG 010 A 1 6 D 1

Gripper Series

010 = 9 lbs.
020 = 22 lbs.
035 = 35 lbs.

Seal Type

1 = Buna-N Seals
2 = Viton Seals

Options

1 = No Options
2 = Air Close/Spring Open
8* = 90 Degree Fittings installed
9* = Straight Fittings installed
*1/8 Diameter tube push-in

Sensing Position

A* = Single Position Open
D = No Sensing
*AG20 & AG35 available only with "A" option single position open

Sensing Type

Standard Cord Set
3 = Reed Switch
6 = No Sensing
Quick Disconnect Cord Set
X = Reed Switch
See Sensor section.

Example order:

Part Number: AG020A13A1*

Part Description: 22 pound grip force angular gripper, buna-n seals, reed switch open position, no option.

*When ordering, DO NOT use spaces or dashes.

When ordering additional seal kits:

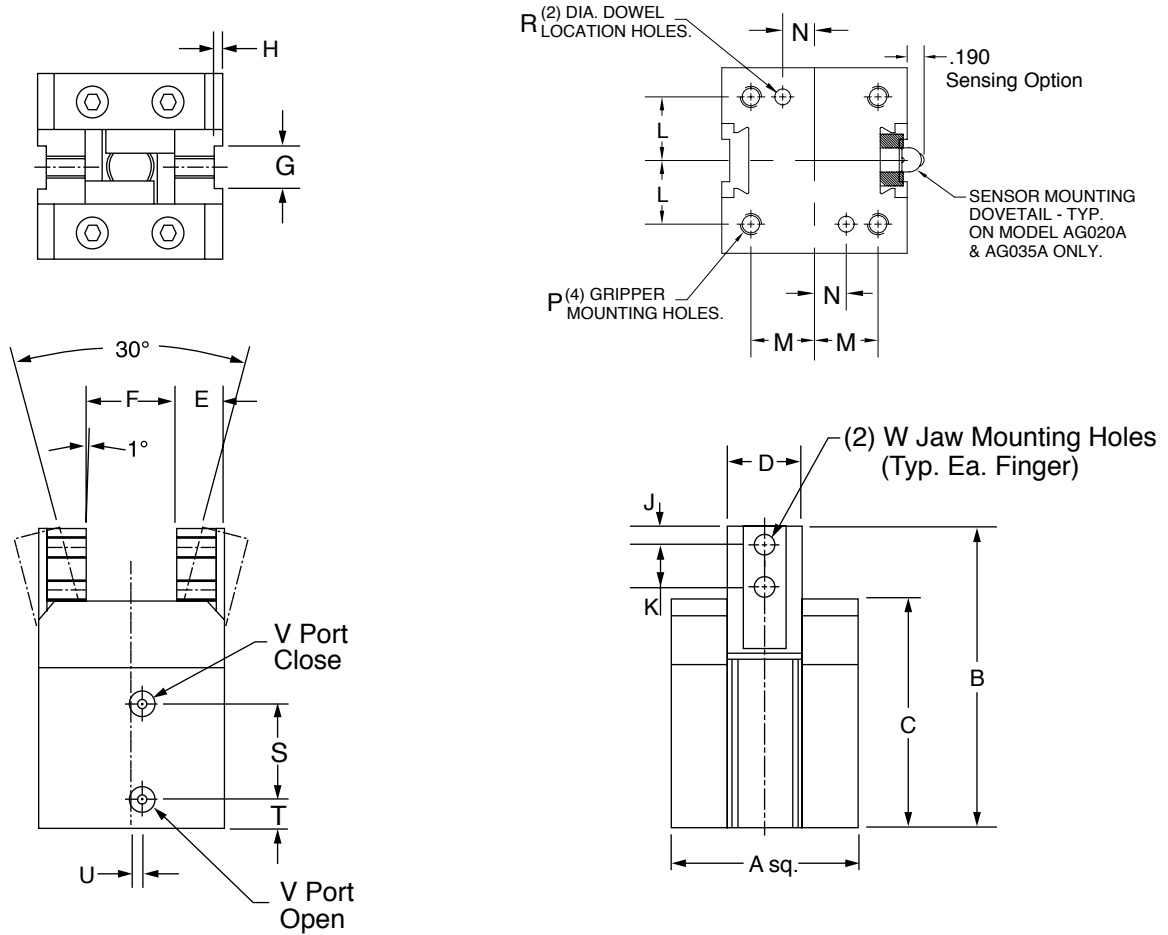
SEAL KIT SERIES	BUNA SEAL KIT	VITON SEAL KIT
AG010A	AGSKB-010A	AGSKV-010A
AG020A	AGSKB-020A	AGSKV-020A
AG035A	AGSKB-035A	AGSKV-035A

When ordering additional switches:

SWITCH DESCRIPTION	STANDARD PART NO.	QUICK DISCONNECT PART NO.
Reed Switch	RSS02	RSQ02
90° 5 meter cable	-	PXC90
Straight 5 meter cable	-	PXCST



AG Series Dimensions



	AG010A		AG020A		AG035A	
	mm	Inches	mm	Inches	mm	Inches
A	20.0	0.78	28.0	1.10	35.0	1.38
B	34.4	1.35	46.5	1.83	57.0	2.24
C	27.0	1.06	35.1	1.38	43.3	1.70
D	7.0	0.28	11.0	0.43	14.0	0.55
E	5.0	0.20	7.0	0.27	9.0	0.35
F	10.0	0.39	14.0	0.55	17.0	0.67
G	4.0	0.16	7.0	0.27	8.0	0.31
H	0.8	0.03	1.0	0.04	1.5	0.06
J	2.0	0.08	3.0	0.12	3.5	0.14
K	4.0	0.16	6.0	0.23	8.0	0.31
L	6.5	0.26	9.5	0.37	12.0	0.47
M	6.5	0.26	9.5	0.37	12.0	0.47
N	2.50	.098	5.00	0.197	6.00	0.236
P	M3x0.5		M3x0.5		M4x0.7	
R	2.0	0.079	3.0	0.118	3.0	0.118
S	10.7	0.42	14.4	0.57	18.1	0.71
T	3.2	0.13	4.7	0.18	6.0	0.23
U	2.0	0.08	2.0	0.08	2.0	0.08
V	M3		M3		M5	
W	M2x0.4		M3x0.5		M4x0.7	

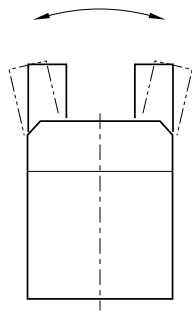


AG Series Angular Grippers

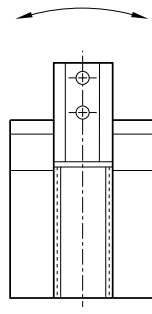
NUMATICS®

AG-Series Gripper Performance Data

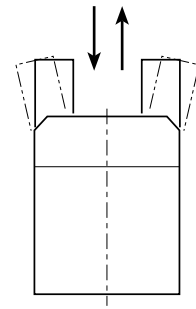
	AG010A		AG020A		AG035A	
Grip Force						
open @ 100 psi	11 lbs	5 kgf	28 lbs	12.5 kgf	44 lbs	20 kgf
close @ 100 psi	9 lbs	4 kgf	22 lbs	10 kgf	35 lbs	16 kgf
Jaw Travel	32 degrees		32 degrees		32 degrees	
Weight	1.3 oz.	.04 kg	5.0 oz.	.14 kg	6.3 oz.	.18 kg
Max Operating Pressure	250 psi		250 psi		250 psi	
Displacement	.01 cuin	.16cm	.04 cuin	.57cm	.06 cuin	1.1cm
Temp Range Buna Seals	-30 F to 180 F	-34 C to 82 C	-30 F to 180 F	-34 C to 82 C	-30 F to 180 F	-34 C to 82 C
Temp Range Viton Seals	-25 F to 400 F	-31 C to 204 C	-25 F to 400 F	-31 C to 204 C	-25 F to 400 F	-31 C to 204 C



Position A



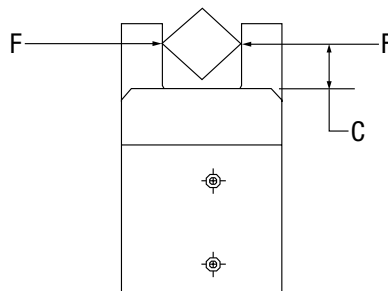
Position B



Position C

Recommended Maximum Load Ratings

	AG010A		AG020A		AG035A	
Max Load Position A	4 inlb	.45 Nm	15 inlb	1.7 Nm	30 inlb	3.4 Nm
Max Load Position B	4 inlb	.45 Nm	12 inlb	1.4 Nm	25 inlb	2.8 Nm
Max Load Position C	12 lbs	5.5 Kgf	29 lbs	13 Kgf	47 lbs	21 Kgf



Grip Force VS. Finger Length

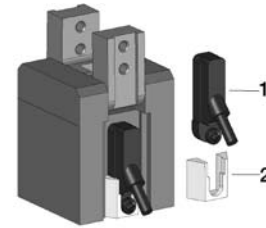
	Grip Force (lbs)		Grip Force (Newtons)	
AG010	$F = \frac{(0.024) \times (P)}{(C+0.126)}$	$P = \text{psi}, C = \text{in}$	$F = \frac{(39.328) \times (P)}{(C+3.200)}$	$P = \text{bars}, C = \text{mm}$
AG020	$F = \frac{(0.088) \times (P)}{(C+0.167)}$	$P = \text{psi}, C = \text{in}$	$F = \frac{(144.207) \times (P)}{(C+4.242)}$	$P = \text{bars}, C = \text{mm}$
AG035	$F = \frac{(0.175) \times (P)}{(C+0.233)}$	$P = \text{psi}, C = \text{in}$	$F = \frac{(286.771) \times (P)}{(C+5.918)}$	$P = \text{bars}, C = \text{mm}$

Example AG020: Operating Pressure => P=80 psi, Grip Distance => C=0.75 in
 Grip Force (lbs) = $\{(0.088) \times (80 \text{ psi})\} / \{0.75 \text{ (in)} + 0.167\} = 7.04/0.917 = 7.68 \text{ lbs}$

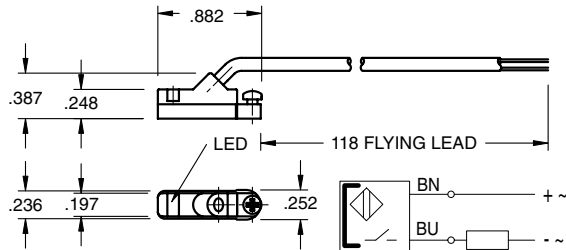


AG Series Switch Information

	SWITCH OR BRACKET DESCRIPTION	STANDARD PART NO.	QUICK DISCONNECT PART NO.
1	Hall Effect - PNP (Sourcing)	HPNPS31	HPNPQ31
1	Hall Effect - NPN (Sinking)	HNPNS32	HNPNQ32
1	Reed Switch	RSS02	RSQ02
2	Dovetail Bracket	DSA	DSA



RSS02 – Reed Switch (AC/DC NO), flying lead



Sensing Data

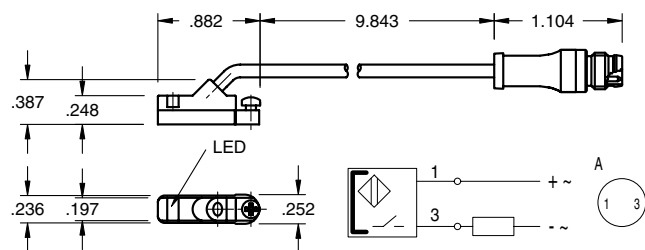
Ambient temperature range T_a	(°F/°C)	-4 to 176 (-20 to 80)
Frequency of operating cycles f at U_e	(kHz)	0.5
Turn on time t	(ms)	≤ 0.25
turn off time t	(ms)	0.03
LED function indication		yes

Electrical Data

Rated operational voltage U_e	(V)	3...130 AC/DC
Supply voltage U_B	(V)	3...130 AC/DC
Voltage drop U_d at I_e Stat./dyn.	(V)	3.5
Rated insulation voltage U_i	(V)	2750 DC (EN 60335-1)
Rated supply frequency	(Hz)	AC/DC
Rated operational current I_e	(mA)	50 (10W max.)
No-load supply current I_o at U_e d./und.	(mA)	0

Observe polarity for correct LED function

RSQ02 – 8mm connector



Mechanical Data

Housing material	Polyamide
Material of sensing face	Polyamide
Connection	PVC cable
Degree of Protection	IP 67
Rated shock: half-sinus, 50g, 11 ms	
Rated vibration environment: 10g, 10...2000 Hz. 90 min	

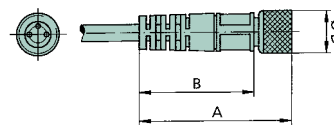


Female Connectors for Reed Switches and Hall Effect Sensors

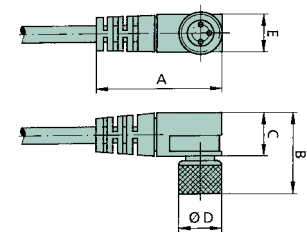
Dimensions (mm)

TYPE	ORDER CODE
Straight, 5 m Cable	PXCST
Elbow, 5 m Calbe	PXC90

Straight Type



Elbow Type

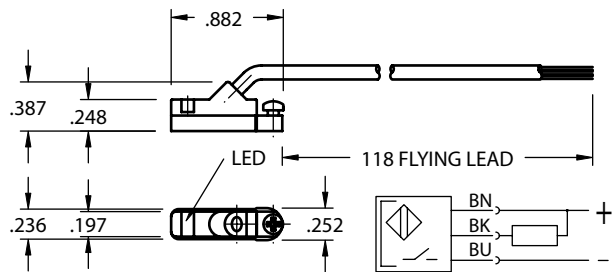




AG Series Angular Grippers

NUMATICS®

HNPNS32 – Electronic Switch (NPN NO), flying lead



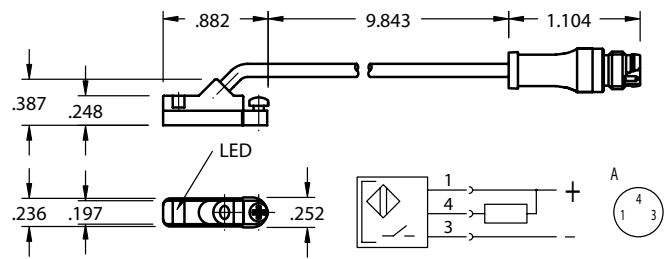
Sensing Data

Ambient temperature range Δ	(°F/°C)	-13 to +158 (-25 to +70)
Temperature drift	(% of S_T)	$\leq 0.3\%/^{\circ}\text{C}$
Frequency of operating cycles f at U_e	(kHz)	10
Turn on time t	(ms)	.05
Turn off time t	(ms)	.05
Utilization categories		DC13
Function—supply voltage indication		YES

Electrical Data

Rated operational voltage U_e	(V)	24 DC
Supply voltage U_B	(V)	10...30 DC
incl. ripple	(% of U_e)	15
Voltage drop U_d at I_e Stat./dyn.	(V)	1/-
Rated insulation voltage U_i	(V)	75 AC
Rated supply frequency	(Hz)	DC
Rated operational current I_e	(mA)	200
No-load supply current I_o at U_e d./und.	(mA)	25/13
Protected against polarity reversal		YES

HNPNQ32 – 8mm connector



Mechanical Data

Housing material	Polyamide
Material of sensing face	Polyamide
Connection	PVC cable
Degree of Protection	IP 67
Rated shock: half-sinus, 30 g, 11 ms	
Rated vibration environment: 55 Hz, 1mm amplitude, 3 x 30	

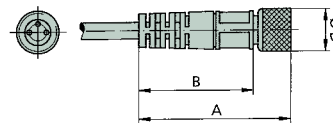


Female Connectors for Reed Switches and Hall Effect Sensors

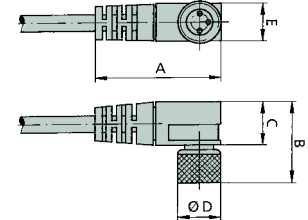
Dimensions (mm)

TYPE	ORDER CODE
Straight, 5 m Cable	PXCST
Elbow, 5 m Calbe	PXC90

Straight Type

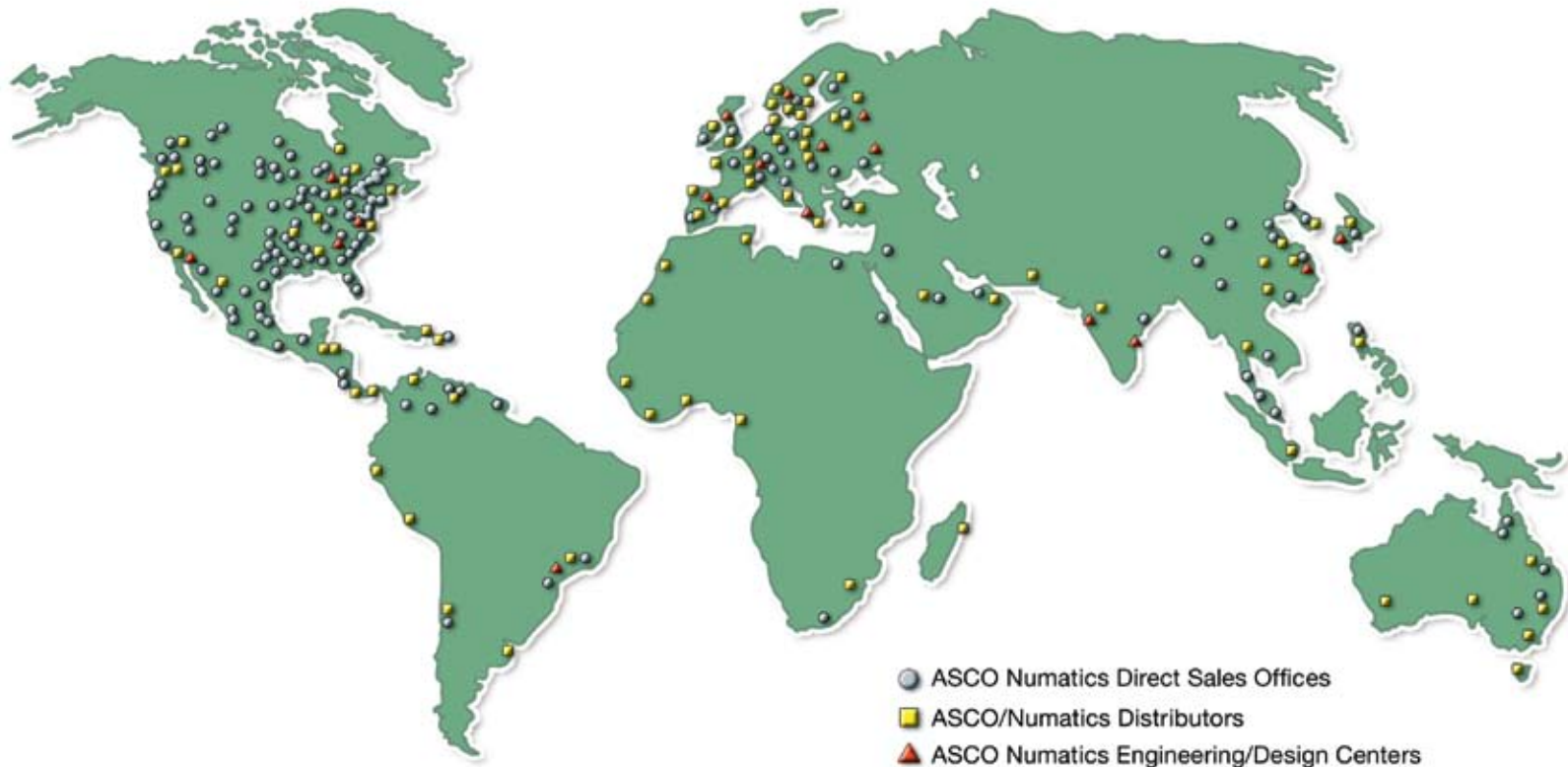


Elbow Type



NUMATICS

*World Class Supplier
of Pneumatic Components*



WORLD HEADQUARTERS

USA

Numatics, Incorporated

46280 Dylan Drive
Novi, Michigan 48377

P: 1-888-Numatics
1-888-686-2842

Canada

Numatics, Ltd

P: 519-452-1777

Mexico

Numatics de Mexico S.A. de C.V.

P: 52-222-284-6176

For a comprehensive listing of all Numatics production and distribution facilities worldwide, visit:

www.numatics.com